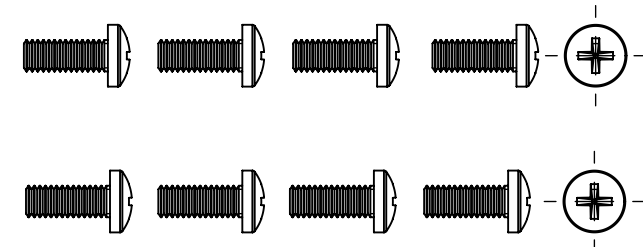
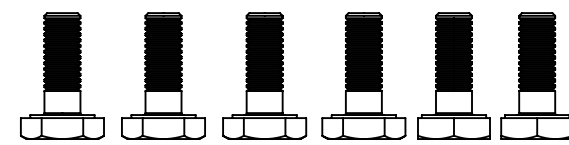


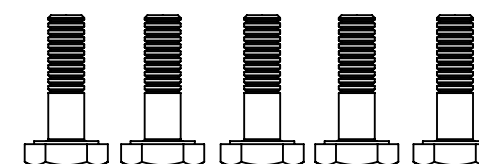
E00-1200 - 10 EA.  
8-32 X 7/16 PAN HEAD PHILLIPS  
TAIL CONE COVER AND SLIDER COVER



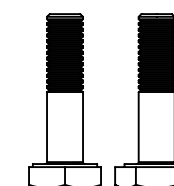
E00-2300 - 6 EA.  
AN3-4A 3/16 X 1/2 BOLT  
HORIZONTAL FIN BRACKET,  
VERTICAL FIN BRACKET



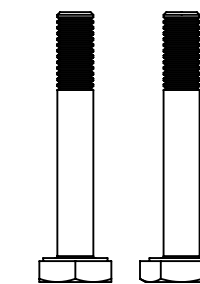
E00-2301 - 5 EA.  
AN3-5A 3/16 X 5/8 BOLT  
VERTICAL FIN BRACKET (REAR),  
5TH BULKHEAD



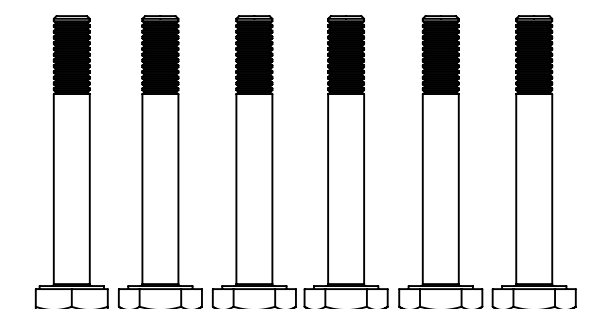
E00-2303 - 2 EA.  
AN3-6A 3/16 X 3/4 BOLT  
VERTICAL FIN BRACKET (FRONT)



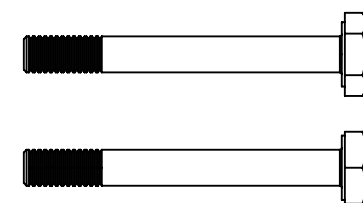
E00-2306 - 2 EA.  
AN3-12A 3/16 X 1-1/4 BOLT  
HORIZONTAL FIN SPAR



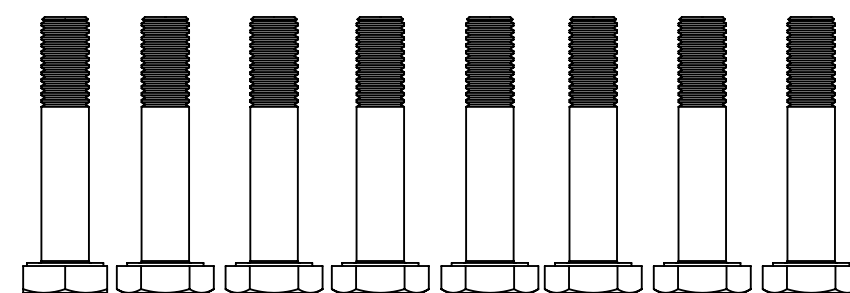
E00-2307 - 6 EA.  
AN3-13A 3/16 X 1-3/8 BOLT  
TAIL BOOM BRACKETS (AIRFRAME)



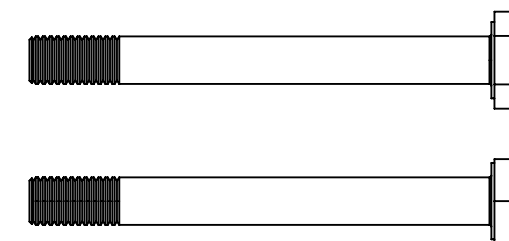
E00-2308 - 2 EA.  
AN3-15A 3/16 X 1-5/8 BOLT  
TAIL BOOM BRACKETS (AIRFRAME)



E00-2432 - 8 EA.  
AN4-12A 1/4 X 1-1/4 BOLT  
TAIL BOOM BRACKETS



E00-2414 - 2 EA.  
AN4-23A 1/4 X 2-3/8 BOLT  
VERTICAL FIN BRACKET (FRONT)

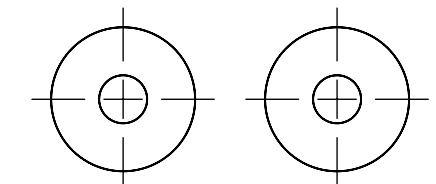


E00-2302 - 1 EA.  
10-32 X 5/8 100 DEGREE  
COUNTERSUNK SCREW  
SLIDER COVER

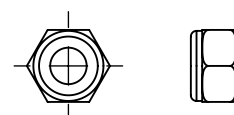


E00-4900 - 48 EA.  
#4 X 1/2 WOOD SCREW  
VERTICAL FIN END PLUGS

E09-3323 - 2 EA.  
SPACER, VERTICAL FIN, FRONT



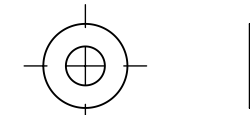
E00-3301 - 19 EA.  
NUT, SELF LOCKING,  
NONMETALIC INSERT, 10-32,  
AN365-1032A / MS20365-1032A



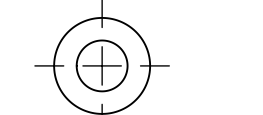
E00-3402 - 10 EA.  
NUT, SELF LOCKING,  
NONMETALIC INSERT, 1/4-28,  
AN365-428A / MS20365-428A



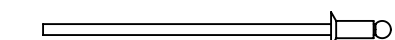
E00-4301 - 42 EA.  
AN960-C10 REGULAR  
WASHER #10 (3/16)



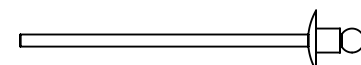
E00-4401 - 20 EA.  
WASHER, REGULAR,  
AN960-C416 1/4



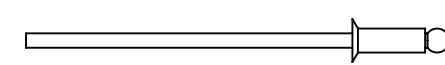
E00-6200 - 30 EA.  
RIVET, BLIND 3/32 X 1/8  
CSK PAAK-302



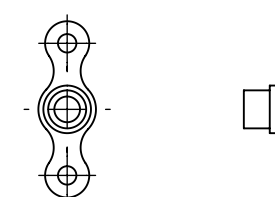
E00-6201 - 26 EA.  
RIVET, STEEL POP 1/8 X 1/8  
HORIZONTAL DOUBLER PLATE



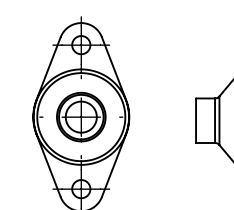
E00-6205 - 20 EA.  
RIVET, BLIND 1/8 X 1/4  
CSK AAC-42



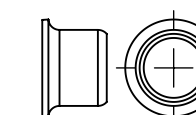
E00-7000 - 8 EA.  
NUT PLATE NAS680A-08-8-32  
TAIL CONE COVER



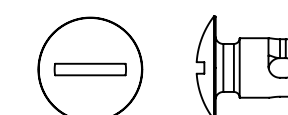
E00-7100 - 5 EA.  
NUT PLATE 3/16 NAS681A-10-32  
HORIZ. FIN, SLIDER COVER



E00-8010 - 8 EA.  
DZUS GROMMET  
GA5-312



E00-8000 - 8 EA.  
DZUS BUTTON REG.  
LENGTH AJ5-35



E00-8020 - 8 EA.  
DZUS SPRING SSA-225

